

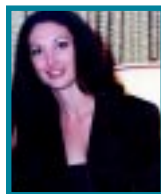
Donor Reception



CPHI Chairman Alvah H. Chapman, Jr. (center) presents dedication plaque to Greenberg Traurig execs Robert Traurig (left) and Cesar Alvarez (right)



(L to R) Ray Goode, Jim Armstrong, Stewart Thomas and L. Grant "Jack" Peebles



Kimberly Green, Green Family Foundation



William L. Morrison, Northern Trust Bank



Patricia San Pedro and Jamie Bravo



Lynn M. Summers and Robert Chisholm



(L to R) Mort Guilford, Trev Flowers, Elsa & Creed Black



Sergio Gonzalez and Hilda Fernandez



Deborah Davidson (at piano) and Sue McKay lead children's chorus



Alvah H. Chapman, Jr., George Batchelor and Betty Chapman

John S. & James L. Knight Foundation
Andreas Foundation
Archer-Daniels-Midland Foundation
Kresge Foundation
Alvah & Betty Chapman
The Batchelor Foundation
Bank of America
Carnival Cruise Lines
Knight Ridder
Northern Trust
Publix Super Markets Charities
Arison Foundation
Charlie & Mary Babcock
Kirk Foundation
SunTrust Bank, Miami
Ryder System, Inc.
The Robert Wood Johnson Foundation
George B. Storer Foundation
Bacardi-Martini USA, Inc.
BellSouth Corporation
Sara H. Woodruff Foundation
John Alden Life Insurance Company
Burdines
Peacock Foundation, Inc.

The Green Family Foundation
H. Wayne Huizenga Family Foundation
Watco, Inc.
We Will Rebuild Foundation
Windmere-Durable Holdings Inc.
Union Planters Bank
Burger King Corporation
American Airlines
Paul Cejas
First Union Foundation
Blockbuster Entertainment
Lennar Corporation
Templeton Worldwide, Inc.
Citibank
The Alma Jennings Foundation, Inc.
Emil J. & Estelle Gould
Hamilton Bank, N.A.
City National Bank
Great Western Financial Corporation
The Herbert W. Hoover Foundation
Victory for the Homeless Foundation, Inc.
Victor Posner
The Garner Foundation

John Thatcher
Alvah H. & Wylina P. Chapman Foundation, Inc.
Jean D. Shehan
Voyager Property & Casualty Insurance Company
Dunspaugh-Dalton Foundation, Inc.
Bank Atlantic
Armando Codina
Holding Capital Group, Inc.
Florida Power & Light
Greenberg Traurig
Blockbuster Entertainment
Amancio V. Suarez
Barclays Bank
Alan & Claudia Potamkin
James W. & Deborah Davidson
United National Bank
The Katcher Family Foundation, Inc.
Don & Mary Anne Shula
Swire Properties
Allegany Franciscan Foundation
The Ware Foundation
Harry Kramer Memorial Fund
The Lynn & Louis Wolfson, II Family Foundation, Inc.



COMMUNITY PARTNERSHIP FOR HOMELESS BOARD OF DIRECTORS

The Honorable Mike Abrams
Richard B. Adams, Jr.
William H. Allen, Jr.
James L. Armstrong III
Sandy Batchelor
Jill Beach-Evans
Dr. Evalina Bestman
Stephen H. Bittel
Creed C. Black
Dr. Bert Blomquist
Philip F. Blumberg
Edward Bullard
Alvah H. Chapman, Jr.
Robert E. Chisholm
Ira C. Clark
Claudia Clunis
Armando Codina
Deborah Davidson
Jose M. Diaz
Dr. Stephen J. Dresnick
Annette Eisenberg
Tomas P. Erban
Gerardo B. Fernandez
Dr. Dorothy Jenkins Fields
Deacon Thomas Franklin
Medhi Ghomeshi
Robert V. Glaser
R. Ray Goode
Dr. Douglas C. Harris
John P. Hashagen

Adolfo Henriques
Robert E. Hilson
Dr. Diane Horner
Osmond C. Howe, Jr.
Tom Huston, Jr.
Dr. Frank Jacobs
Glendon Johnson
Dr. Walter C. Jones, III
Joseph P. Lacher
R. Kirk Landon
Reverend Richard Ledgister
Lynn B. Lewis
Joseph H. Mathos
J. Porter McClean
Carlos Migoya
Carmen Millares
Susan Moll
William L. Morrison
Albert H. Nahmad
Dr. Emanuel Papper
Theodore M. Parsons
Dennis Pastrana
Aaron S. Podhurst
Dr. Dorothy Robinson
Rebecca Rosen
Bruce Rubin
Wayne S. Schuchts
The Honorable Caryn Canner Schwartz
Jean D. Shehan
Mark Small

Roger Soman
Sash Spencer
John F. Stumpff
Amancio Suarez
Stewart P. Thomas
Bill R. Tillet
Dr. John Uribe
Captain Daniel Vincent
Reverend Tommy Watson
Dr. Sanford Ziff

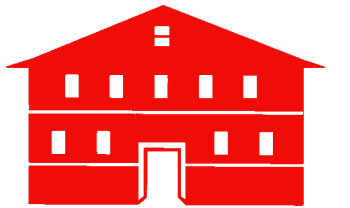
Contact
E-mail: info@cphi.org
Web site: www.cphi.org

**Homeless Assistance Center
Downtown Miami**
1550 North Miami Avenue
Miami, Florida 33136
(305) 329-3000

**Homeless Assistance Center
Homestead**
28205 S.W. 125 Avenue
Homestead, FL 33033
(305) 416-7000

NON-PROFIT ORG.
U.S. POSTAGE
PAID
MIAMI, FL
PERMIT NO. 2590

Partners



the newsletter of Community Partnership for Homeless, Inc. Spring 2001

Former Resident

By Jim Russell

Twice in her life, Connie Henderson has found badly needed help and inspiration at the Homeless Assistance Center in Miami.

On both occasions, she was a victim of circumstances not of her own making. The native of Savannah, Ga., who moved to Miami in 1978, was forced to leave after her apartment building was condemned. In 1995, Connie's home was demolished to make way for school construction in her Central Miami neighborhood. With nowhere to turn, she and her three children – two of them teenagers – found temporary residence at the center at 1550 North Miami Ave.

"I was so fortunate," she said. "Everyone at the center loved us. We had a private room and three meals a day. They take people who are in need and help them get back on their feet. They helped my oldest child (a son) get a job. And they helped me learn how to be a nursing assistant."

Connie said she was instructed on how to apply for a job, how to compose a resume detailing her capabilities and aspirations, and even how to dress to impress potential employers.

"My kids took classes at the center, learned arts and crafts, and were taken on trips to Miami Seaquarium," she said.

She spent six months at the center after which, with help from personnel at the homeless facility, she found an apartment nearby. She had family support, too, since her sister and grandfather lived in the area.

Then, sadly, in 1997, Connie, a diabetic, had to have a leg amputated. A few months later, when the apartment house where she lived was condemned, she returned to the homeless center. "Once again, the staff was wonderful to me," she said. "I was in a wheelchair but Mr. Brown (Operations Director Alfredo K. Brown) encouraged me to get a prosthesis. He said I should walk, walk, walk – and I did."

Now, she has her own apartment not far from the homeless center and is on her own again. Determined to show appreciation for the love and care she had received, she volunteers twice a week for assorted duties at the center.

Connie's 23-year-old son works in Atlanta and regularly helps support his mother financially. Her two other children



Now a Volunteer !

attend schools in Northwest Miami. On days when she is not engaged in chores at the center, she cares for an elderly lady who, like herself, is diabetic. A lifelong churchgoer, Connie attends services regularly, often with her grandfather, and attributes much of her optimistic nature to her religious faith. Asked, "How do you get around town to different places?" she replied: "When I need to go somewhere, the people at the center often provide transportation."

Now, Connie is planning an out-of-town trip, back to her Savannah home, for her great grandmother's 100th birthday celebration.

Our Mission

We offer dignity and hope to all so that no persons sleep on the streets of our community.

Board Meeting Dates for 2001

All meetings will take place at 1550 North Miami Avenue on Thursdays at 8 a.m., unless otherwise advised.

May 10	September 13
June 14	October 11
July 19	November 15
August–No Meeting	December 13

PAGE 1

A STORY BY JIM RUSSELL

PAGE 2

CITY APPROVES EXPANSION – CPHI FREE OF RESTRICTIONS (add graph and AHC photo)

Dear Friends:

On January 22nd, the City of Miami Planning and Zoning Board approved Community Partnership for Homeless’ request to expand our homeless bed capacity by approximately 52 beds.

Under the leadership of Lynn Lewis, volunteer Legal Committee Co-Chair, and Vickie Garcia-Toledo, our pro bono attorney from the law firm of Bilzin Sumberg Dunn Baena Price & Axelrod, and supported by approximately 20 members of our Board, the CPHI story was convincingly told and approved overwhelmingly by the Planning and Zoning Board.

Actually our request was to eliminate all the conditions that have been placed upon us by the City Commission, which approved our building permit in July of 1994. Many of these conditions will be continued as a part of our operating policy and were formalized in a resolution passed by the Board in early January.

Our operating policies were also reaffirmed and ratified by the Trust, our major funder and public partner. The enclosed bar graph shows the successful outplacement from the 1550 Center year-by-year from 1995 and projected through 2001, with or without the expansion, and with or without the flexibility to use vacant beds from South Dade.

With the expansion approved and the conditions eliminated, we fully expect to bring down the on-the-street homeless population well below the 1,600 level currently in place.

The goal of CPHI is to reduce the on-the-street homeless population to the lowest possible number. Approval (by a 10-0 vote) of the Planning and Zoning Board of the City of Miami is a great step in that direction.

Supporting CPHI’s presentation was Al Brown, Acting Executive Director; Philip Blumberg, Chairman of the Greater Miami Chamber of Commerce and a CPHI Director; Bob Chisholm, Chair of the Design & Construction Committee; Annette Eisenberg, Chair of the Neighborhood Advisory Committee of the 1550 center; and your Chairman.

WISHING UPON A STAR LIST

The need for these items continues to grow everyday. You may donate items or money to purchase them. Drop offs accepted at 1550 N. Miami Avenue or 28205 S.W. 125 Avenue. For additional information, please call Trev Flowers at (305) 329-3042 or e-mail tbflowers@cphi.org.

Children’s Needs:

Disposable Diapers – All Sizes

Baby Powder
Baby Bottles
Teething Rings

Pacifiers
Baby Formula
Baby Strollers
Baby Cribs
Car Seats
Wheel Chairs/Walkers/Crutches

Miscellaneous Needs:

Art & Craft Supplies
School Supplies
Board Games
Movies/Videos
Beach/Bath Towels (for camp)
Backpack or zipper vinyl bag
Computer Software Games
Furniture
Filing Cabinets

General Needs:

Shampoo
Toothbrushes (Children/Adults)
Toothpaste
Deodorant
Feminine Hygiene
Shaving Cream
Shoes/Tennis Shoes (Children, Men, Women)
Underwear (Children, Men, Women)
Clothing (Children, Men, Women)
Socks (Children, Men, Women)
Depends/Serenity for Adults
Sheets
Towels
Soap

Kitchen Needs:

Baked Goods (prepackaged sweet rolls, cookies, cakes, pies, donuts)
Canned Goods (fruits & vegetables)
Milk
Orange Juice
Sodas

PAGE 3

NEW EXECUTIVE DIRECTOR ANNOUNCED

(add photo of Daniel Vincent, Alvah H. Chapman, Al Brown)

We like to take a moment and introduce you to H. Daniel Vincent, who will become the executive director of Community Partnership for Homeless on May 14, 2001. You may recognize the name, as Vincent has served as a CPHI Director for four years.

Since 1997, he served as Area Commander of the Salvation Army in Miami-Dade, in which he worked to reduce the organization’s debt from \$1.3 million to \$0. In addition to supervising a 259 bed homeless shelter, the Salvation Army under Vincent’s leadership, managed two daycare facilities serving 217 children.

Vincent, who also is an ordained minister, says he is up to the leadership challenge. With his extensive experience and spiritual commitment, we are honored to have Daniel Vincent at CPHI and expect to see great things from him!

Kudos to Teamwork

Al Brown, who served as acting executive director for the last few months, has been named deputy director/operations director. Brown continues to show his commitment to CPHI through dedicated service and great care. We are proud to have him on our team!

BE AN MVV – Most Valuable Volunteer - at CPHI!

By Al Brown

Have you ever thought about who the people are that make our meal program run seven days a week, 365 days a year? These are the folks who feed upwards of 130,000 mouths annually.

And what about those who help triage the countless donations we receive to our warehouse on a daily basis? Or the innumerable volunteers who work at the front desk and other areas of the Centers?

To make our services run, we receive thousands of contributions – both in money and time. And with support like this, the list of gratitude is longer than Santa’s list of *Naughty* and *Nice*, which makes it difficult to recognize each person - although every single one of them deserves it!

Generous, nameless people, families, civic organizations and religious congregations help us continue the battle against homelessness everyday. Reverend Tommy Watson, co-chairman of the CPHI Religious Committee, is one of our regular meal supporters and tells us that the volunteers from his congregation feel as fulfilled as the people they are helping.

“Sometimes the homeless feel as if they are constantly pushed away and ignored,” says Rev. Watson. “Rather than feeling neglected, it is important to let the homeless know that people care. The volunteers from my congregation return from the feeding centers satisfied that they were able to make a significant contribution to the lives of the homeless.”

CPHI makes volunteering for the meal program simple. You can donate food, money to purchase the food, or volunteer to help prepare and serve the meals. With three meals a day, there is always a need for your assistance.

To participate, please call Trev Flowers at (305) 329-3041or e-mail tbflowers@cphi.org. We look forward to hearing from you soon.

(add small side bar box with this contact information as well)



Success of Homeless is Well Planned

By Alvah H. Chapman, Jr., Chairman, CPHI

There are many factors in the Miami-Dade County Community Homeless Plan that contribute to success. But there are certain fundamental elements that can be used by communities across the nation that have the will and the heart to proceed. To these special communities, I give you my insight and experience.

Fundamentals Contributing To Success:

- Strategic Plan** – Community leadership — political, business, and homeless providers – must come together to develop a strategic plan to alleviate homelessness.
 - Public/Private Partnership** – Solving the homeless dilemma in each community is not a matter for the public sector alone, nor is it a matter for the private sector alone. In Miami-Dade County we have formed a partnership of the two with public partner Miami-Dade County Homeless Trust and private partner Community Partnership for Homeless.
 - Dedicated Public Funding Source** – Public interest in homeless causes comes and goes, and therefore, cannot be trusted for the annual budgeting process of the city or county for public funding. A 1% sales tax on food and beverages in larger restaurants that produce \$6.5 million per year over an extended period of time is the future-funding vehicle approved by the legislature of Florida, the Governor, and the Miami-Dade County Commission.
 - Continuum of Care Concept** – The continuum of care concept must be embraced as a part of the plan. Temporary care, primary care and advanced care – all three are important in providing the continuum of care that will enable homeless people to move through the system and out into society as productive members of the community.
 - Homeless Assistance Center Concept** – The Homeless Assistance Center concept is a relatively new concept in this country that involves bringing together under one roof a partnership of agencies that provide service to the homeless. The Homeless Assistance Center concept not only provides food, shelter and clothing (the fundamentals), but it also provides medical care, education, legal services, child care, relationships with the churches and religious organizations and social service agencies. The idea is to have a “one stop shopping center” for the homeless residents.
 - Significant Private Sector Funding** – Significant private sector funding is a requirement for a successful homeless program. Here in Miami, the business community responded very generously (to a greater degree than any community in America, we are told) with private and in-kind funding dollars that exceeded \$37 million. Without significant private sector support, there is little chance for success.
 - Significant Federal Grants** – In recent years, U.S. HUD has chosen to reward communities that have developed a plan, voted for a local tax, established a public/private partnership, and raised significant private money. This has resulted in considerable Federal dollars being available in the Miami area to help the plan move forward.
- And, perhaps the most significant guiding principle is....
- Prayer** – The leaders of the Miami-Dade County Community Homeless Plan recognized that we did not have the answers, the strength, the knowledge, nor the energy to do this enormous job to help the least, the last and the lost. We called on Almighty God at the beginning of each meeting. These prayers have been answered and this community has been blessed.

In addition to the eight fundamentals, the Miami Plan has also been built on the strength and the energy of a wonderful, committed community, a great Board of the Trust, a dedicated Board of Community Partnership for Homeless, the wonderful staffs of both organizations, and the magnificent assistance of the provider community which has rallied around and cooperated in beautiful fashion.

The Miami-Dade County Community Homeless Plan is an example of a community that has really “come together” to significantly reduce the “on the street” population of the homeless by 40% and has a goal of reducing it to zero into the foreseeable future.

This can happen in any community in America if there is a will and a commitment of the public and private sector to put in place the above fundamentals as outlined.



Wishing Upon a Star List

The need for these items continues to grow everyday. You may donate items or money to purchase them.

Drop offs accepted at 1550 N. Miami Avenue or at 28205 S.W. 125 Avenue. For additional info, please call Trev Flowers at (305) 329-3042 or e-mail tbflowers@cphi.org.

Children’s Needs:

Disposable Diapers (all sizes)
Baby Powder
Baby Bottles
Teething Rings
Pacifiers
Baby Formula
Baby Strollers
Baby Cribs
Car Seats
Wheel Chairs/Walkers/Crutches

Miscellaneous Needs:

Arts & Crafts Supplies
School Supplies
Board Games
Movies/Videos
Beach/Bath Towels (for camp)
Backpacks or zipper vinyl bag
Computer Software Games
Furniture
Filing Cabinets

General Needs:

Shampoo/Soap
Toothbrushes (Children/Adults)
Toothpaste
Deodorant
Feminine Hygiene
Shaving Cream
Shoes/Tennis Shoes (Children, Men, Women)
Underwear (Children, Men, Women)
Clothing (Children, Men, Women)
Socks (Children, Men, Women)
Depends/Serenity for Adults
Sheets
Towels

Kitchen Needs:

Baked Goods (prepackaged sweet rolls, cookies, cakes, pies, donuts)
Canned Goods (fruits & veg- etables)
Milk
Orange Juice
Sodas

A Lesson from My Father

By La Yonn Steiner

“You make a living by what you get, but you make a life by what you give.”
Anonymous

We come by business naturally in our family. Each of the seven children in our family worked in our father’s store, “Our Own Hardware-Furniture Store,” in Mott, North Dakota, a small town on the prairies. We started

working by doing odd jobs like dusting, arranging shelves and wrapping, and later graduated to serving customers. As we worked and watched, we learned that work was about more than survival and making a sale.

One lesson stands out in my mind. It was shortly before Christmas. I was in the eighth grade and was working evenings, straightening the toy section. A little boy, five or six years old, came in. He was wearing a brown tattered coat with dirty worn cuffs. His hair was straggly, except for a cowlick that stood straight up from the crown of his head. His shoes were scuffed and his one shoelace was torn. The little boy looked poor to me - too poor to afford to buy anything. He looked around the toy section, picked up this item and that, and carefully put them back in their place.

Dad came down the stairs and walked over to the boy. His steel blue eyes smiled and the dimple in his cheek stood out as he asked the boy what he could do for him. The boy said he was looking for a Christmas present to buy his brother. I was impressed that Dad treated him with the same respect as any adult. Dad told him to take his time and look around. He did.

After about 20 minutes, the little boy carefully picked up a toy plane, walked up to my dad and said, “ How much for this, Mister?”

“How much you got?” Dad asked.

The little boy held out his hand and opened it. His hand was creased with wet lines of dirt from clutching his money. In his hand lay two dimes, a nickel and two pennies - 27 cents. The price on the toy plane he’d picked out was \$3.98.

“That’ll just about do it,” Dad said as he closed the sale. Dad’s reply still rings in my ears. I thought about what I’d seen as I wrapped the present. When the little boy walked out of the store, I didn’t notice the dirty, worn coat, the straggly hair, or the single torn shoelace. What I saw was a radiant child with a treasure.

Donor Report



We send a very special **thank you** to everyone who has donated as much as a dollar or a helping hand. In addition, we like to personally recognize the generosity of the following people:

October
George E. Batchelor, president and chairman of the Batchelor Foundation Inc. donated \$1,000,000
Victor Posner donated \$ 150,000
Swire Properties donated \$100,000

September
Lynn and Louis Wolfson II Family Foundation, Inc. donated \$100,000
Harry Kramer Memorial Fund donated \$100,000

June
The Ware Foundation donated \$100,000

May
Emil J. & Estelle Gould (By Taffy Gould) donated \$160,000

March
Ambassador & Mrs. Paul Cejas donated \$100,000

January
NationsBank (Bank of America) donated \$275,000
Northern Trust Bank donated \$200,000
Allegheny Franciscan Foundation \$100,000



Q & A

Q: How many people are homeless?

A: In the course of one year, as many as two million people experience homelessness for some period of time. In total, 750,000 Americans are homeless on any given night. CPHI serves more than 5,000 homeless people each year, helping more than 20,000 people since opening our centers.

Q: Are homeless people mostly adults?

A: No, **the average age of a homeless person in America today is 9.**

Q: How many children are homeless?

A: Almost one-quarter of the homeless in America are children. Every night 100,000 children sleep in a shelter, abandoned building or on the street. Throughout the year, 1.35 million children will experience homelessness. CPHI helps an average of 200 children each day.

Q: Why are people homeless?

A: Two trends are largely responsible for the rise in homelessness over the past 15-20 years: a growing shortage of affordable rental housing and a simultaneous increase in poverty. Incomes for the poorest Americans have not kept pace with rising housing costs.

Q: Is homelessness increasing?

A: A 1997 study in 11 communities and four states found that shelter capacity had more than doubled in nine communities and three states. In two communities and states, shelter capacity tripled over the decade. These numbers indicate a dramatic increase in homelessness in the United States over the past two decades. Women with children make up the fastest growing segment of the homeless population. The good news is that CPHI has been able to help decrease the homeless population on the streets by 40 % since opening our centers.

Q: What must be done to eliminate homelessness?

A: Ensure affordable housing, provide subsidies to make existing housing affordable, create additional housing through rehabilitation, and where needed, new construction. Ensure adequate income for working men and women to earn enough to meet basic needs, including housing. Give men and women access to jobs and job training and those not able to work help in housing and social services. Give those in need access to health care, child care, mental health care and substance abuse treatment. Support laws that prohibit discrimination against homeless people.

Q: How long do people stay homeless?

A: Research on the length of homelessness states that 40% of homeless people have been homeless less than six months, and that 70% of homeless people have been homeless less than two years. Fifty-eight percent served by CPHI were homeless less than one month.

This information was gathered from www.endhomelessness.org, Quinebaug Valley Community College, www.nlchp.org and www.helpforwomen.org.

Partners  is published quarterly by Community Partnership for Homeless (CPHI). We welcome and encourage comments and suggestions. You may contact Trev Flowers at 305-329-3042, or write to: CPHI, 1550 North Miami Avenue, Miami, Florida 33136. Editorial assistance provided by Weber/RBB.



Many people do not know all the facts about homelessness, so we put together a list of most frequently asked questions. If you have other questions you want answered, please visit www.cphi.org or for general inquires, e-mail Trev Flowers at tbflowers@cphi.org.